



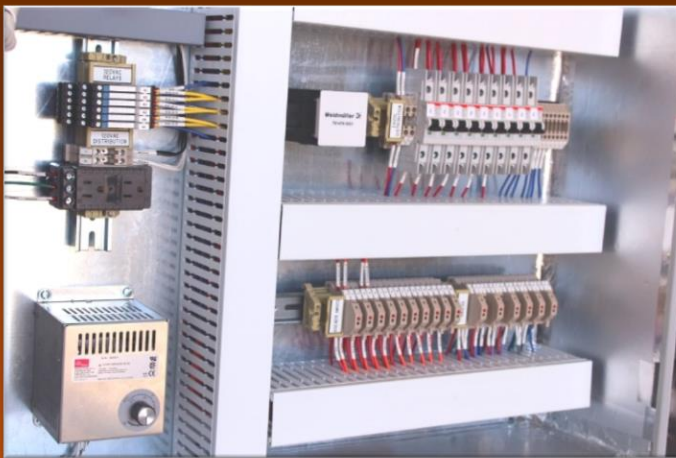
# CROSSROAD

ENERGY SOLUTIONS INC

## Panel Fabrication Facility ∞ Custom Controls

Crossroad Energy Solutions certified panel shop is located in Claresholm, Alberta and is a customer-oriented facility that focuses on providing clients with a wide variety of customized or standardized control panels. Capable of handling large bulk orders or small customized singular orders, our staff focuses on client satisfaction. We currently provide our clients solutions in Canada, USA and select International markets.

With 24-hour tech support, we stand behind our work and our clients.



### Features:

- Design build Electrical Control Panels
- General & hazardous locations
- SCADA & RTU Panels
- PLC Panels
- Communication Panels
- Power Distribution Panels
- Heat Trace Panels
- Underbalanced Drilling Systems
- Production Testing Measurement
- Pneumatic Control Panels

### Crossroad Energy Solutions Inc

#1, 137 Columbia Drive  
Claresholm, Alberta TOL OTO  
Office: 1-877-872-0222  
Sales: 403-597-2533



# CROSSROAD

ENERGY SOLUTIONS INC

## Panel Shop Manager

Wade Thackeray

403-819-2255

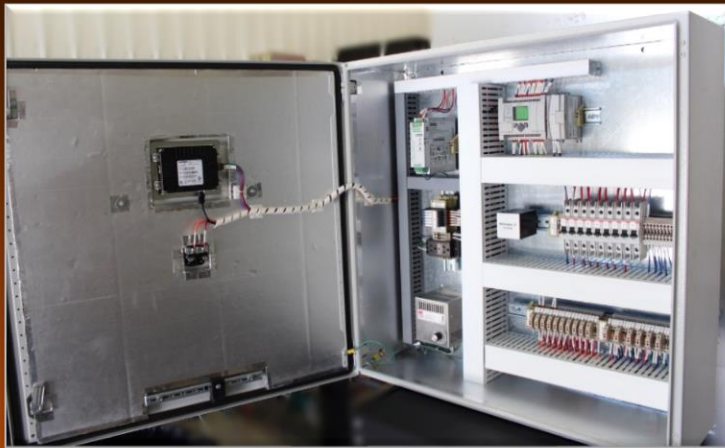
wade.thackeray@crossroadenergy.com

## Sales Manager

Jay McCooye

403-597-2533

jay.mccooye@crossroadenergy.com



Member of the Intertek Custom Panel Builders Program

Eligible to use the ETL mark for the certification of Industrial Control Panels to the following standards:

### General Purpose Control Panels to:

UL508A:2018Ed.3, CSA C22.2#14:2013 Ed.12

### Hazardous locations control panels to:

UL 121201:2017Ed.9 Nonincendive Electrical Equipment For Use In Class I And Ii, Division 2 and Class Iii, Divisions 1 And 2 Hazardous (Classified) Locations

CSA C22.2#213:2016Ed.2 Nonincendive Electrical Equipment For Use In Class 1 And 2, Division 2 And Class 3, Divisions 1 And 2 Hazardous (Classified) Locations

UL 698A:2012 Ed.3 Industrial Control Panels Relating To Hazardous (Classified) Locations

